

◆ Before installing the DynaMO AI Series

CAUTION: During the installation of the DynaMO, take sufficient care to avoid personal injury.

- 1) Power off the Macintosh, and unplug the power cable from it.
- 2) Open the panel on the right side of the Macintosh. Be careful not to damage any cables or cards in the Macintosh.
- 3) Disconnect the cables connected to the CD/DVD drive and the ZIP drive (if one is connected).
- 4) Remove the front bezel on the front of the Macintosh.
- 5) Remove the two screws of the drive bay at the front of the Macintosh. Then, pull out the drive bay.
- 6) If a ZIP drive is connected, remove the four screws that secure the ZIP drive, and remove it.

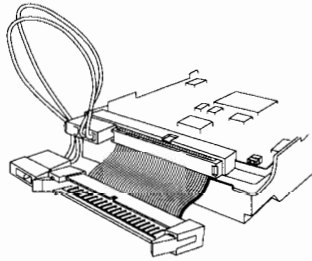


Figure 1 Cable connection

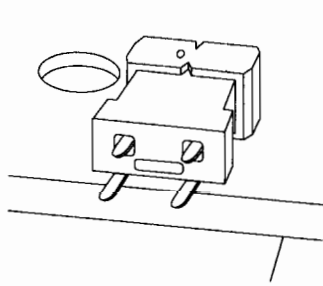


Figure 2-1 Jumper setting (4 pins)

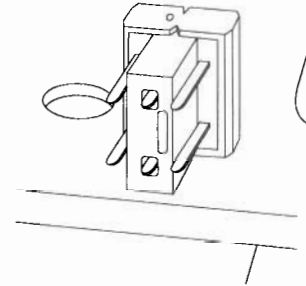


Figure 2-2 Jumper setting (6 pins)

◆ Drive setting

- 7) Connect the supplied extension cable (Power, IDE) to the DynaMO drive, as shown in Figure 1. Then, either refer to Figure 2-1 or to Figure 2-2, according to the number of jumper pins that are on the rear right side of the drive. Set the jumper to Slave according to the appropriate figure.

CAUTION: Connect Pin 1 (colored line) of the IDE cable to Pin 1 of the connector (the drive or extension cable). Incorrect connection causes a system malfunction.

◆ Installing the DynaMO

- 8) Insert the DynaMO into the 3.5" bay, and secure it with the four screws supplied. Pass the extension cable that was connected in Step 7) through the hole at the rear of the bay.
- 9) Connect the DynaMO cable, and then connect the CD/DVD drive cable that was removed in Step 3).
- 10) Secure the drive bay with the two screws that were removed in Step 5).
- 11) Remove the faceplate from the front bezel that was removed in Step 4), and replace it with the supplied faceplate, as shown in Figure 3. When attaching the supplied faceplate, affix the colored plastic sheet of your choice on the back side of the faceplate. Then, affix the supplied label that corresponds to the installed device (640MB/1.3GB), to the right side of the MO disk insertion area on the faceplate as shown in Figure 4.
- 12) Attach the front bezel to the Macintosh, and close its side panel.

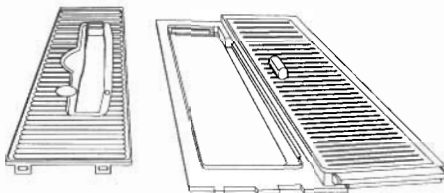


Figure 3 Removing the faceplate

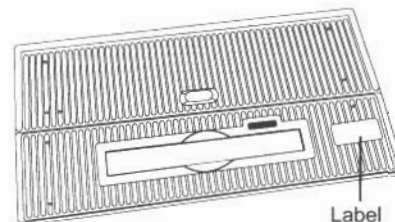


Figure 4 Affixing the label

◆ Installing the device driver

- 13) Refer to the installation manual on the supplied device driver's CD-ROM, and install the device driver.

To get the latest driver information access the following URL:

<http://www.fujitsu.co.jp/hypertext/aboutmo/en/index.html>